

## Overview

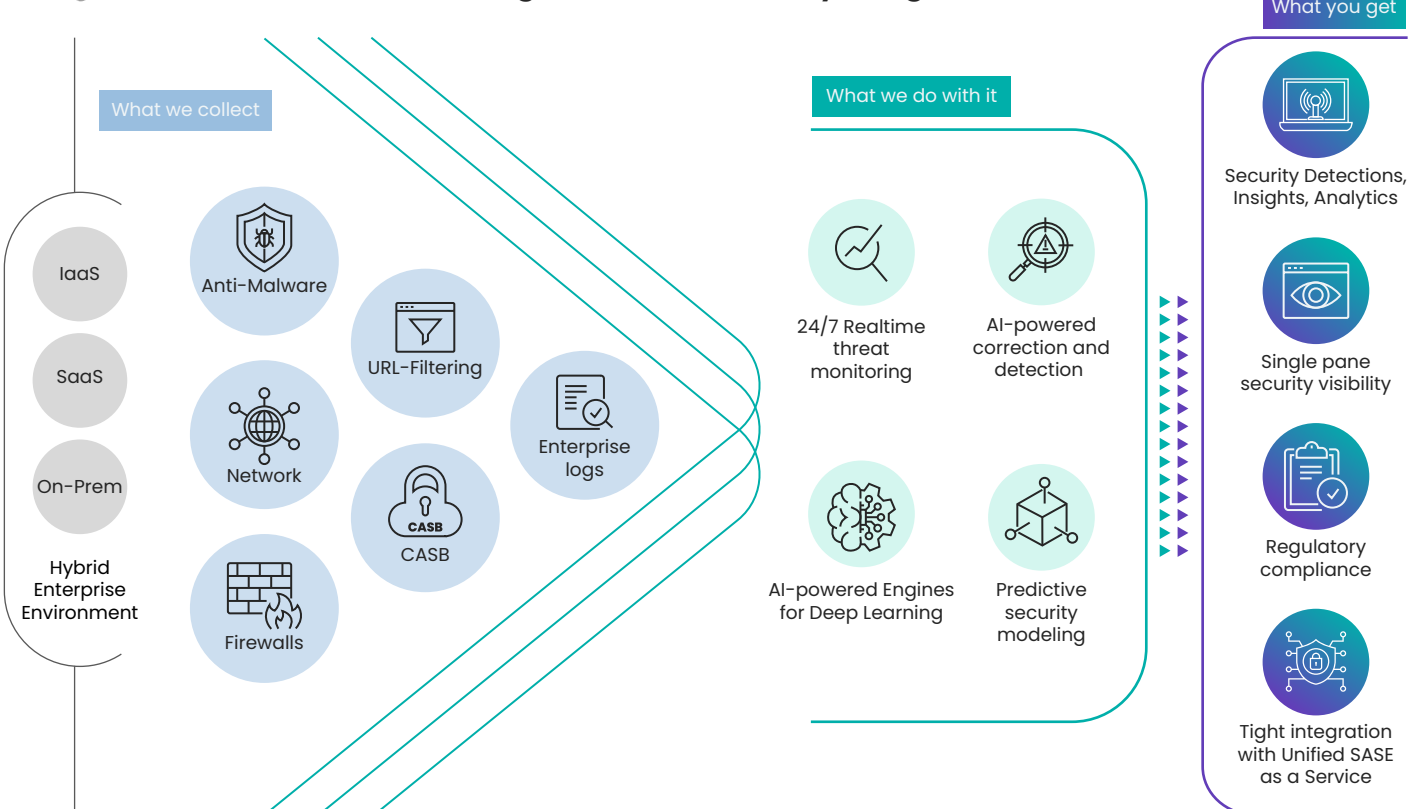
In today's hyper-connected digital landscape, businesses face significant cybersecurity challenges, including AI-enabled cyberattacks, rising cybercrime, and evolving threats from adversaries. As enterprises embrace digital transformation and integrate AI and GenAI, they encounter increased vulnerabilities that demand robust protection. Aryaka AI>Observe, powered by Sequestek, provides a comprehensive AI-driven solution for enterprise security monitoring, threat detection, prevention, and analytics, helping organizations safeguard their operations in an increasingly complex threat environment.

Fragmented networks and security solutions are especially susceptible to attacks and introduce security challenges and risks associated with delayed detection, prevention, and response to cyber incidents. Ultimately, these factors contribute to an increased likelihood of data breaches that impact business continuity, brand, and assets, often causing financial loss and harming trust in a company.

Despite considerable investments in point security solutions, many businesses lack enterprise-wide and unified security visibility. They also face a cybersecurity talent and skills shortage, making it challenging to effectively monitor threats, detect incidents, and implement advanced security measures.

Aryaka AI>Observe is an add-on solution tightly integrated into Aryaka's Unified SASE as a Service offering. Together, Aryaka provides a comprehensive and unified solution for networking, security, and observability for enterprises worldwide.

## aryaka ai>observe Translating Data into Security Insights



## Benefits

- ▶ Seamless integration with Aryaka Unified SASE as a Service
- ▶ Out-of-the-box compliance reporting
- ▶ Unified visibility with single-pane dashboards
- ▶ Predictive analytics for proactive threat detection and prevention
- ▶ Enhanced detection accuracy with AI-powered systems
- ▶ Reduced alert fatigue and faster incident analytics times
- ▶ Risk quantification for improved security posture
- ▶ Scalability for growing businesses with reduced Total Cost of Ownership (TCO)

## Core Features and Capabilities

| Features                                  | Capabilities   |
|---|--|
| Full Visibility Across Network            | Full visibility of network attack surface with opportunity to add and integrate more diverse devices and applications (cloud, SaaS, GenAI).  |
| Advanced Threat Detection                 | AI-powered models detect known and unknown threats using behavior analysis and anomaly detection.  |
| Deep Learning AI-Powered Detection Engine | AI engine trained on 2000+ scenarios for ITDR (Identity Threat Detection and Response), NTDR (Network Threat Detection and Response), anomalies, and threats and self-learns for enhanced detection. |
| Coexist, Complement, and Consolidate      | Integrates with existing security tools, offers end-to-end visibility, and supports scalable devices and telemetry integration.  |
| Global Threat Intelligence                | Leverages Sequestek Labs' global threat intel, honeypots, and enrichment sources to enhance real-time threat detection.  |
| MITRE ATT&CK framework mapping            | Clear and easy-to-use visibility of mapping to MITRE ATT&CK framework of incidents.  |
| Fast Onboarding and Seamless Migration    | Quick deployment with minimal client IT intervention, bundled for easy onboarding and migration.   |

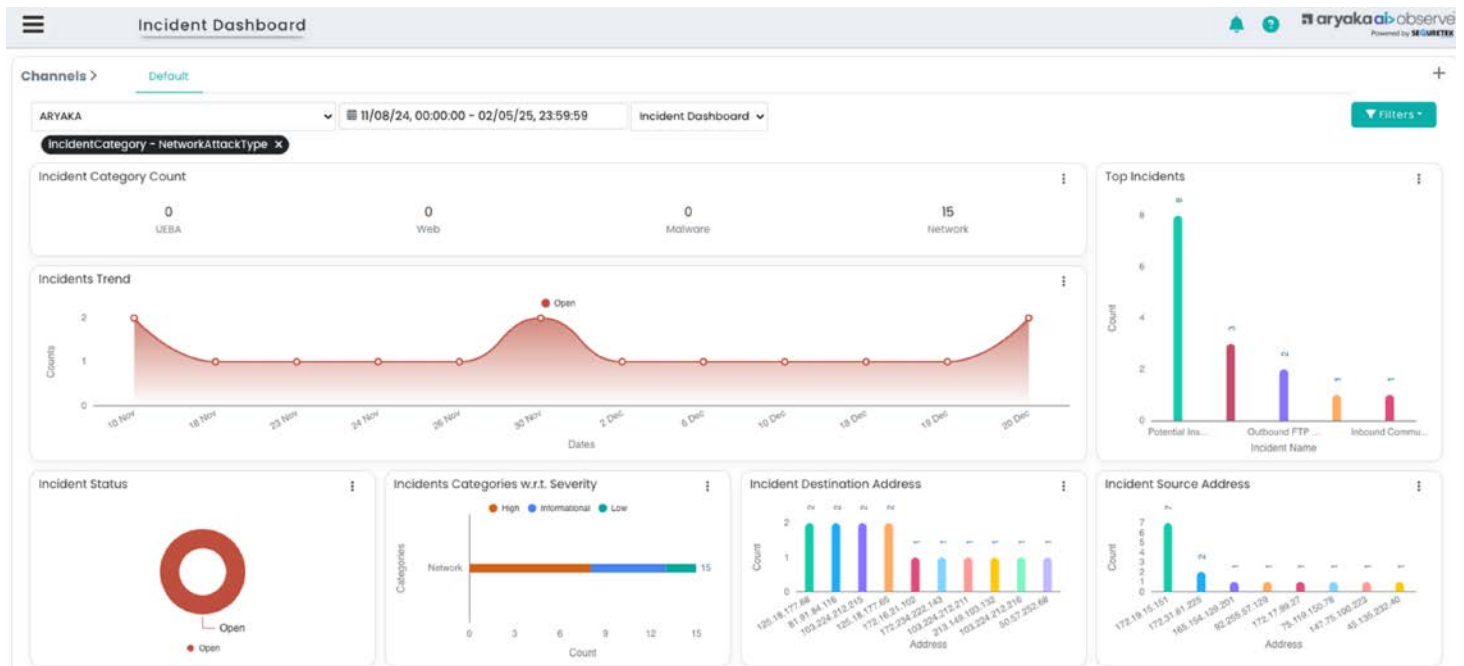
## Scalable Enterprise Security Reporting

Provides automated data enrichment, insightful analytics, and customizable real-time dashboards for reporting and compliance readiness.

## Compliance Reporting

Offers 100+ pre-built compliance reports for mandates like OCC, SEC, HIPAA, PCI-DSS, and more.

With these powerful capabilities, IT and Security teams of all skill levels can efficiently ensure continuous and consistent security with Aryaka AI>Observe, powered by Sequestek.



## Additional services available directly from Sequestek

For an organization's IT Team that wants additional help with a managed SOC capability, Aryaka can help introduce customer teams to Sequestek

## Why Aryaka AI>Observe?







Aryaka AI>Observe provides organizations with an AI-powered, cloud-native solution that seamlessly integrates with Aryaka Unified SASE as a Service. Leveraging Aryaka's end-to-end visibility and deep learning modules provides full observability into security issues. The integration with Aryaka's security stack as part of the Aryaka OnePASS architecture ensures robust cybersecurity threat detection and prevention while minimizing operational disruptions. From predictive analytics to automated incident prevention, the solution simplifies security management and empowers organizations to achieve compliance and scalability in an increasing attack surface landscape.

## Licensing

Aryaka AI>Observe is available as add-on service to Aryaka Unified SASE as a Service and three deployment service plans. The add-on service has two types of licenses to meet different deployment needs: site licenses and remote user licenses. Site licenses are used to enable AI>Observe service at a specific location. User licenses are used to enable it for remote users.

| Service (add-on)  | Prerequisite Service Plan  | Recommended Plans                               |
|-------------------|--|---|
| Aryaka AI>Observe | Aryaka SD-WAN<br>Aryaka Unified SASE<br>Aryaka Advanced Security | Aryaka Unified SASE<br>Aryaka Advanced Security |

## Aryaka SD-WAN Features

|  |   |  |
|--|---|--|
|  <p><b>Secure SD-WAN</b></p>    |  <p><b>Global Connectivity</b></p> |  <p><b>Multi-Cloud</b></p>          |
|  <p><b>WAN Optimization</b></p> |  <p><b>AI&gt; Perform</b></p>      |  <p><b>Secure Remote Access</b></p> |



## Aryaka Unified SASE Features

Everything in Aryaka SD-WAN plus

|  |   |  |
|--|---|--|
|  <p><b>NGFW-SWG</b></p> |  <p><b>IPS</b></p> |  <p><b>Anti-Malware</b></p> |
|--|---|--|

## Aryaka Advanced Security Features

Everything in Unified SASE plus

|  |  |
|--|--|
|  <p><b>CASB</b></p> |  <p><b>DLP*</b></p> |
|--|--|

\*Coming soon



+1.888.692.7925

info@aryaka.com

© COPYRIGHT 2015-2025 ARYAKA NETWORKS, INC. ALL RIGHTS RESERVED.

Aryaka is the leader in delivering Unified SASE as a Service, a fully integrated solution combining networking, security, and observability. Built for the demands of Generative AI as well as today's multi-cloud hybrid world, Aryaka enables enterprises to transform their secure networking to deliver uncompromised performance, agility, simplicity, and security. Aryaka's flexible delivery options empower businesses to choose their preferred approach for implementation and management. Hundreds of global enterprises, including several in the Fortune 100, depend on Aryaka for their secure networking solutions. For more on Aryaka, please visit [www.aryaka.com](http://www.aryaka.com)

About Aryaka