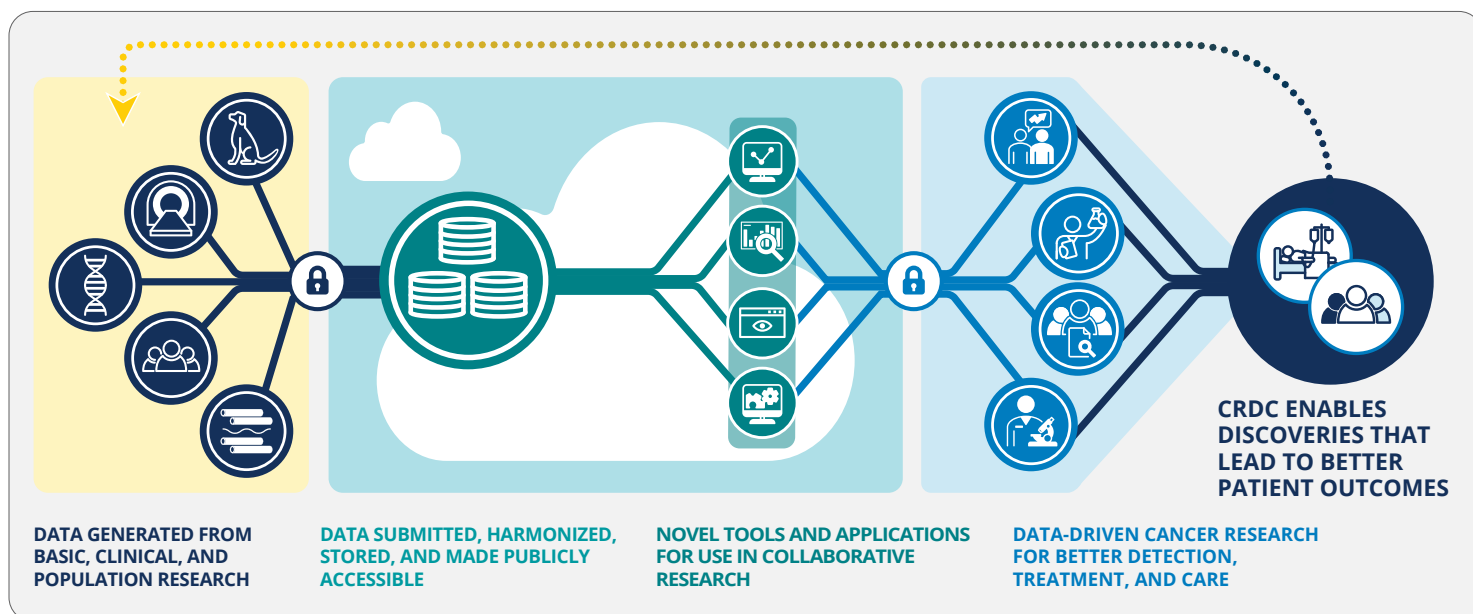


# Accelerating Cancer Research Through Data Sharing NCI CANCER RESEARCH DATA COMMONS (CRDC)

The CRDC is NCI's primary data science cloud-based platform that co-locates interoperable data and analytical tools in an elastic computing infrastructure.



## UPLOAD AND SHARE YOUR DATA

The CRDC includes a collection of data commons that store, manage, and make accessible diverse data types for original and comparative analysis. The CRDC data commons house genomic, proteomic, imaging, comparative oncology, clinical, and other research data.



## ACCESS NEARLY 7 PETABYTES OF DATA

Select data sets include:

- The Cancer Genome Atlas (TCGA)
- Therapeutically Applicable Research to Generate Effective Treatments (TARGET)
- The Clinical Proteomics Tumor Analysis Consortium (CPTAC)
- Human Tumor Atlas Network (HTAN)

Open and controlled-access data are available through NCI Cloud Resources or through the CRDC's collection of data commons. NCI currently offers the Cancer Data Service, Genomic, Proteomic, Imaging, and Integrated Canine Data Commons. Additional data commons—such as Population Science and Clinical Trials — will be added in 2024.



## ANALYZE DATA SETS USING MORE THAN 1,000 CLOUD-BASED TOOLS

The CRDC makes a wide range of analytic and visualization tools available through its Cloud Resources. Bring your data to the cloud to work with more than 1,000 tools and workflows that can be used as is or tailored as needed. You also can build your own applications within a secure computing instance.



## SHARE DATA WITH THE CANCER RESEARCH COMMUNITY

To ensure broad, equitable data sharing that benefits the research and participant (patient and advocate) communities, NCI's Office of Data Sharing has established a comprehensive vision and strategy for cancer research and clinical care data. Learn more at [datascience.cancer.gov/data-sharing/policies](https://datascience.cancer.gov/data-sharing/policies)

To get started with the NCI Cancer Research Data Commons, visit [datacommons.cancer.gov](https://datacommons.cancer.gov) | [ncicrdc@mail.nih.gov](mailto:ncicrdc@mail.nih.gov)